



MONTHLY MEMBERSHIP PROGRESS REPORT

District 202 M

Results as of: 2/28/2017

GMT: Huck Taingahue

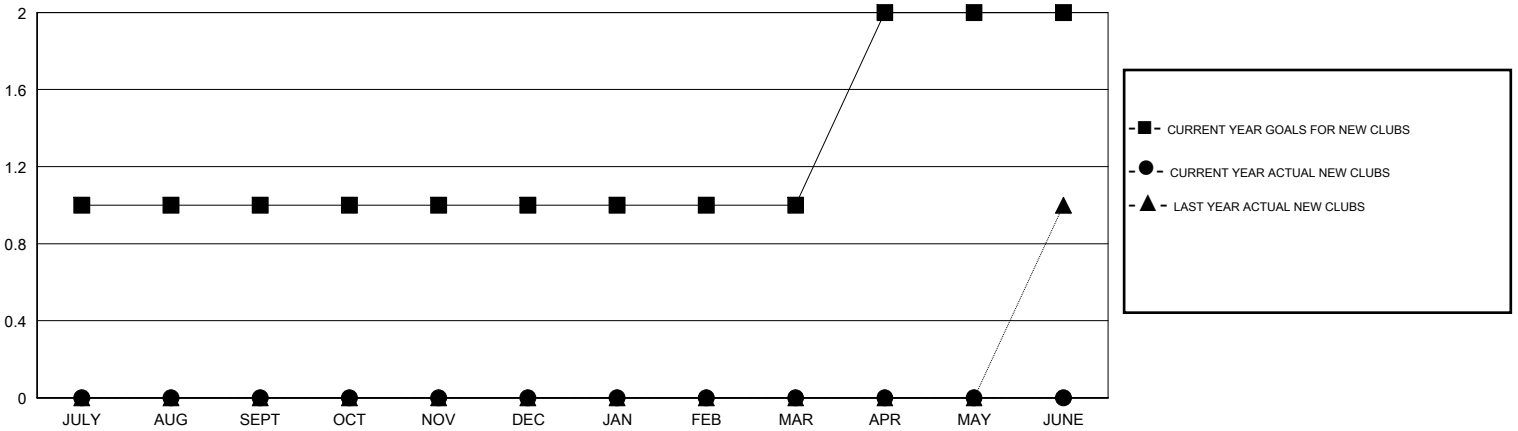
LOCATION NEW ZEALAND

GMT CA

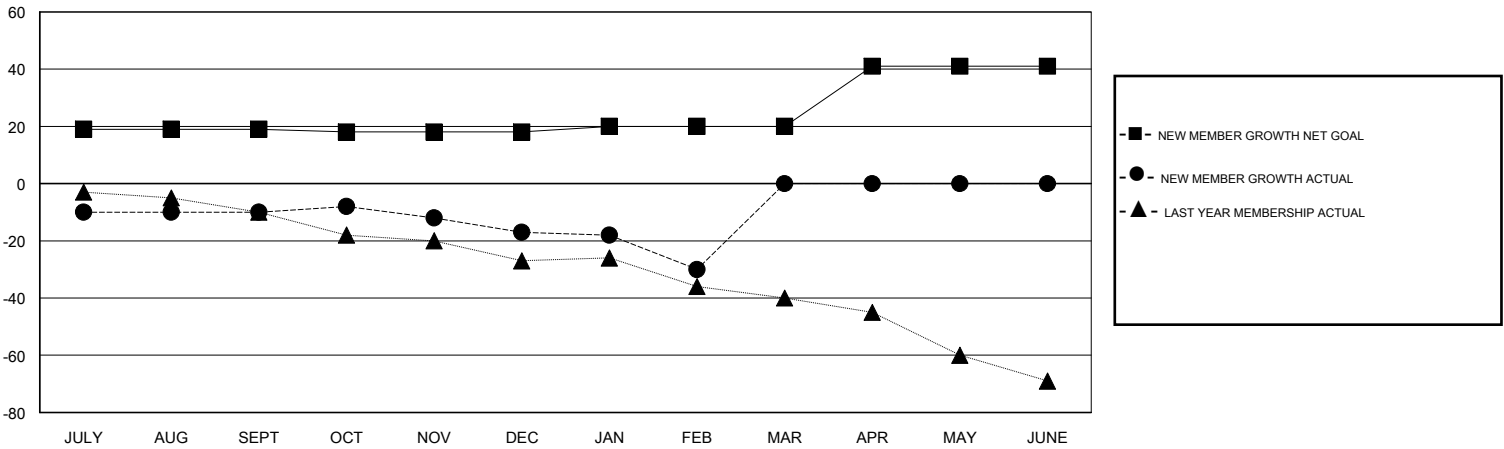
Clubs			
RESULTS FOR 2016-2017			
QUARTER	NEW CLUB GOAL	NEW CLUBS	DROPPED CLUBS
JULY/AUG/SEPT	1	0	0
OCT/NOV/DEC	0	0	0
JAN/FEB/MAR	0	0	0
APR/MAY/JUNE	1	0	0

Members			
RESULTS FOR 2016-2017			
QUARTER	NEW MEMBER GROWTH NET GOAL (not reinstated or transfers)	NEW MEMBER GROWTH ACTUAL (not reinstated or transfers)	DROPPED MEMBERS ACTUAL (including transfers)
JULY/AUG/SEPT	19	21	31
OCT/NOV/DEC	-1	22	29
JAN/FEB/MAR	2	8	21
APR/MAY/JUNE	21	0	0

GOALS AND ACTUAL NEW CLUBS CUMULATIVE



GOALS AND ACTUAL MEMBERS CUMULATIVE



DROPPED CLUBS: 0	29 CLUBS OF 50 ADDED 1 OR MORE NEW MEMBERS	<u>GENDER DISTRIBUTION</u>	
DROPPED MEMBERS		MALE	830 (64.04%)
DECEASED	13	FEMALE	466 (35.96%)
CLUB CANCELLED	0	TOTAL FAMILY UNIT MEMBERS	
OTHER	68	154	
TOTAL	81	FAMILY MEMBERS PAYING HALF DUES	
		78	

[CLICK HERE FOR CUMULATIVE MEMBERSHIP DATA](#)